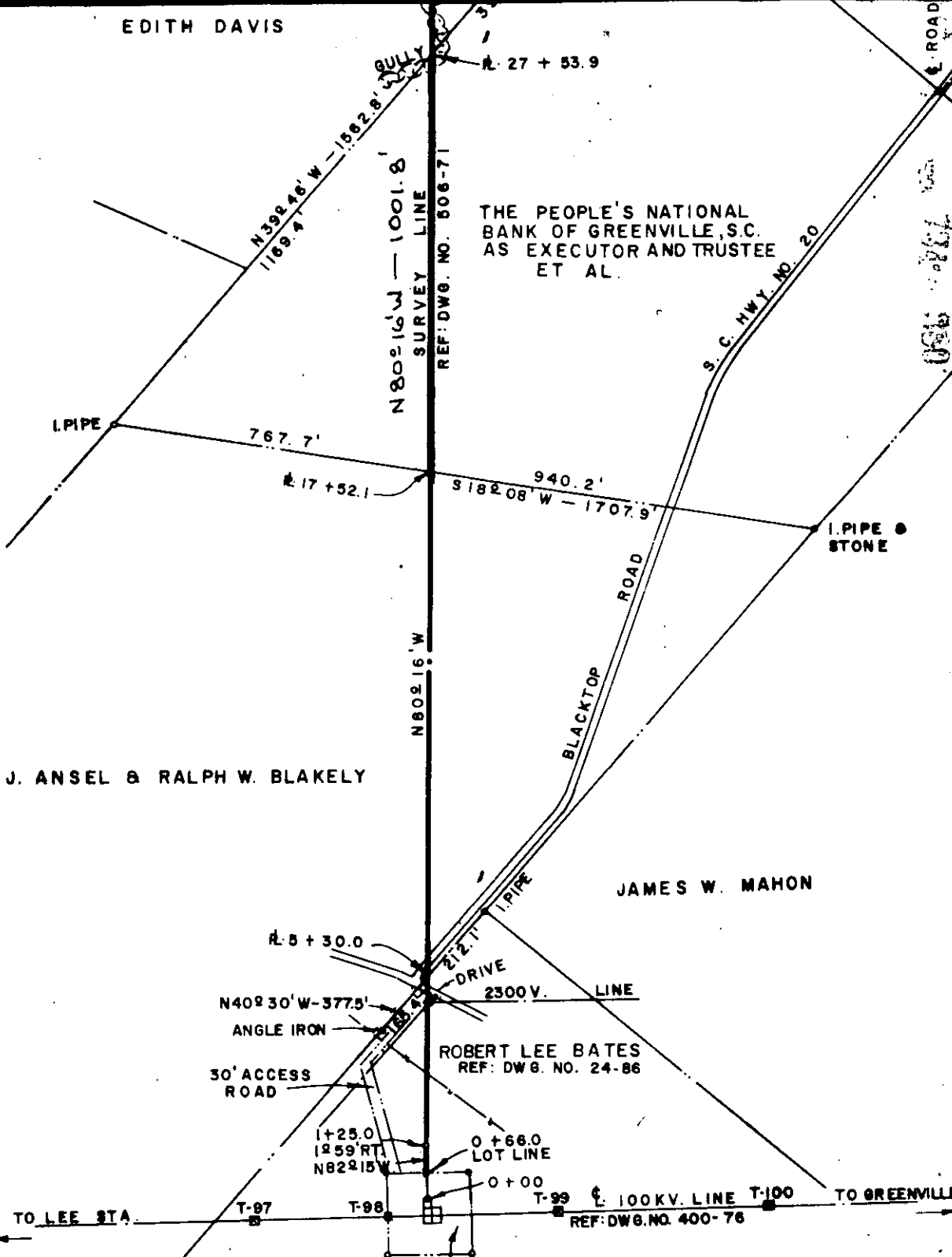


EDITH DAVIS

GULLY R. 27 + 53.9

THE PEOPLE'S NATIONAL BANK OF GREENVILLE, S.C. AS EXECUTOR AND TRUSTEE ET AL.



J. ANSEL & RALPH W. BLAKELY

JAMES W. MAHON

ROBERT LEE BATES REF: DWG. NO. 24-86

DUKE POWER COMPANY (ROBERT LEE BATES) REF: DWG. NO. 154-131

DUKE POWER COMPANY  
 MAP OF RIGHTS OF WAY FOR  
 J. P. STEVENS & CO., INC.  
 "ESTES PLANT"  
 TRANSMISSION LINE  
 PIEDMONT, S. C.

Recorded October 24, 1963 At 5:06 P.M. # 12201 GREENVILLE COUNTY

SCALE: 1" = 300'  
 BOOK NO. 712  
 OCTOBER 7, 1963  
 FILE NO. 53-80